



Japan 2019 – Nihon (日本)2019

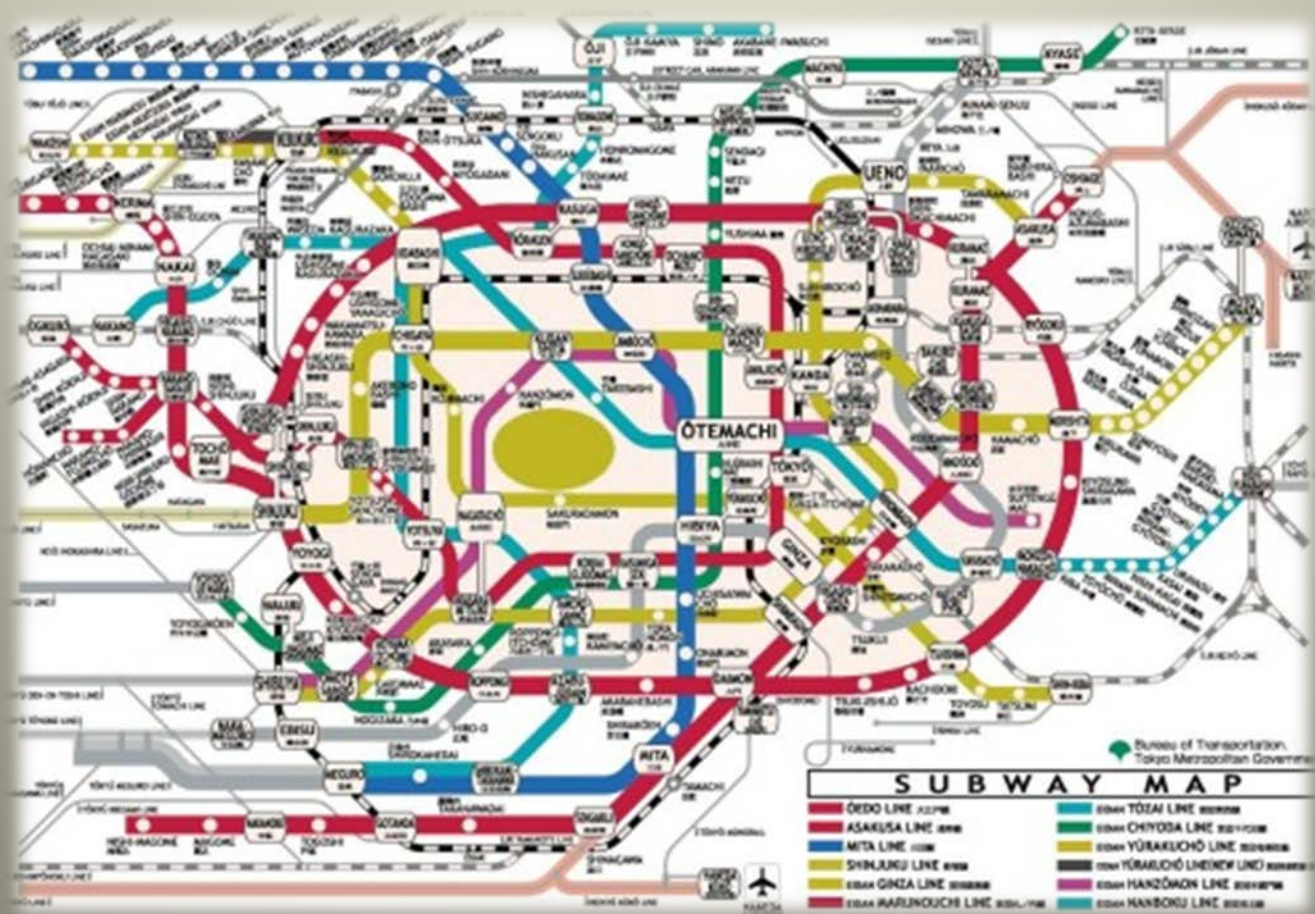
Tōkyō 東京

Kyōto 京都 – Nara 奈良

Ishigaki 石垣 - Taketomi 竹富 - Iriomote 西表

# TOKYO 京

# TOKYO 京





Shiba Park Hotel



出口 A1 築地場外市場方面  
Exit A1 for Tsukiji Outer Market





















店内調理特選品の内装  
※本日は、お祝いメニューをご用意しております。  
※本日は、お祝いメニューをご用意しております。  
※本日は、お祝いメニューをご用意しております。  
営業時間 11:00-22:00





# KAMINARIMON GATE

*The front gate of Sensoji Temple. The god of thunder is standing on the left; the god of wind, on the right.*

金龍山



見仲

仲見

和正電器









# 浄土宗 大本山 増上寺

The chief temple of the Jodo-Buddhist sect. ZOJOJI



## 沿革

浄土宗の七大本山の一つ、三峰山広度院増上寺が正式の呼称です。  
 開山は明徳四年（一三九三年）、浄土宗第八祖 西賢聖上人によって、江戸貝塚（現在の千代田区紀尾井町）の地に浄土宗正統南無仏道場として創建され、慶長三年（一五九八年）に現在の地に移転しました。  
 文明二年（一四七〇年）には勧修所に任せられるなど、関東における浄土宗教学の殿堂として宗門の発展に寄与し大きく発展してきました。  
 江戸時代初期、増上寺法主十二世 源賢存上人、後の「観音国師」は徳川家康公から深く厚意を受け、手厚い保護もあり増上寺は大隆盛へと向かって行きました。  
 徳川将軍家の菩提寺として、また関東十八種林の筆頭として興隆し、浄土宗の総本山となりました。  
 その大きさは、寺域一万石余、二十数万坪の境内内、山内寺院四十八軒、学寮百数十軒、常時三千名の僧侶が修学する大寺院でした。  
 現代でも浄土宗大本山として格式を保ち、宗教活動の文化活動も幅広く行われ、建造物、古文書、経典など多数の重要文化財を保管しています。



**1 大殿 (本堂・宝物展示室)**  
 Daiden (Hondo; Main Hall)  
 1階 種々の法要受付及び控室  
 2階 本堂 本尊阿弥陀如来をお祀りしています  
 2階 仏閣 (遺構)  
 地下1階 宝物展示室  
 Basement 1: Zojoji Treasures Gallery  
 1st floor: Reception desk and waiting rooms for memorial services  
 2nd floor: Hondo: A large main image of Amida Buddha is enshrined.  
 3rd floor: Altar room (also used as a practice room for priests in training)

Daiden (Hondo), which forms the core of the Buddhist compound of Zojo-ji, was rebuilt in 1974 by combining traditional Buddhist temple architecture with modern architecture. Enshrined in this hall is a large main image (honzon) of Amida Buddha (made during the Muromachi Period - around 14th-16th century) with an image of the great teacher Shan-tao (who perfected China's Pure Land Buddhism) at its right and an image of Honen Shonin (who founded Jodo Shu) at its left.



**2 安国殿 Ankokuden**  
 徳川家康公の念持仏として有名な、秘仏「黒本尊阿弥陀如来」が祀られています。黒本尊は家康公が深く尊崇し、そのご加護により重要な引継ぎを続け、戦の勝利をおさめ、天下統一の大業を成就したという霊験あらたかな阿弥陀如来像で鎌倉や、厄除けの仏像として江戸時代以来、広く人々の尊崇をおつめています。

- ◆ 正月15日・5月15日・9月15日に黒本尊御開帳（正五弘新会）
- ◆ 各種御祈願・水子供養をお受けしております。
- ◆ お守り・お札・お土産等を扱う札所がございます。

Enshrined in this building is the Black Image of Amida Buddha, which was deeply worshiped by Ieyasu Tokugawa, the 1st Tokugawa Shogun. Since the Edo Period, it has been widely revered as a Buddhist image which brings victory and wards off evils. For this reason, it also used as a prayer hall.  
 ◆ The Black Image of Amida Buddha is shown to the public three times a year (Jan. 15th, May 15th, and Sep. 15th) with Buddhist services on those days  
 ◆ Praying in front of the image is available (Ask at the office in Ankokuden)  
 ◆ Services for aborted fetuses or still-borns are also available (Ask at the office in Ankokuden)  
 ◆ Charms and souvenirs are available for purchase

## History

Zojo-ji was founded in 1393 by the Jodo Shu denomination as the central monastery in the Kanto (east Japan) region devoted to the rigorous practice of the renobutsu (rebirth) tradition of Amida Buddha's name.  
 Zojo-ji was relocated to the present site in 1598 after Ieyasu Tokugawa, founder of the Tokugawa shogunate, entered Edo (present-day Tokyo) in 1590 to establish his provincial government. After the start of the Edo Period when the Tokugawa shogunate ruled Japan, Zojo-ji became the family temple of the Tokugawa family and an unparalleled grand hall was built. Zojo-ji also served as an administrative center to govern the religious studies and activities of Jodo Shu. In those days, 34 precincts covered an area of 828,000 square meters which also contained 48 smaller attached temples and about 150 ginnial schools. Moreover, as many as 3,000 monks and novices regularly resided here as students.  
 Nevertheless, as the Tokugawa shogunate came to an end and the Meiji Era started in 1868, an anti-Buddhist movement swept through the country. During World War II, Zojo-ji along with all of Tokyo was fire bombed and its main hall, attached temples, and the mausoleum of the Tokugawa family were destroyed. Thus, Zojo-ji was profoundly affected by political and social circumstances. Today, however, its main hall and other structures have been rebuilt, and Zojo-ji continues to serve as the main temple of Jodo Shu and central nembutsu seminary for priests and novices in the Kanto region. Furthermore, it has endeared itself to the general public as both a great religious landmark in the metropolis Tokyo and a hub of religious and cultural activities.



**3 圓光大師堂** Ikko-daishitsu-ji (temple erected in memory of Honen Shonin)  
 法然上人の御身帳が奉安されております。  
 The remains of Honen Shonin are enshrined.



**4 徳川将軍家墓所** Mausoleum of the Tokugawa Shoguns  
 徳川家の菩提寺として現在私人の所有と徳川和宮さまをはじめ、香公の正室・御室、そして子女の墓所があり、かつての隆盛を感ぜています。  
 After Ieyasu Tokugawa started to rule the Kanto (east Japan) region, he appointed himself protection in Edo (as the honza temple of the Tokugawa family). Located in its precincts are the tombs of the Tokugawa Shoguns, Imperial Princess Kazunomiya (wife of Shogun Iemitsu), and his other wives and children of the Shoguns. Moreover, these tombs serve as a reminder of the prosperous Edo Period.



**5 貞恭庵** Teikyo-an  
 皇女和宮さまゆかりの御茶室  
 A tea house related to Imperial Princess Kazunomiya (wife of Shogun Iemitsu)



**6 光摂殿** Kosyoden  
 1階 講堂  
 3階 大広間 (天井絵が飾られています。非公開)  
 1st floor: stage hall  
 3rd floor: large open space (ceiling depicts pictures of flowering plants, decorated by 120 Japanese artists and fixed into ceiling)  
 (What opens to the public except certain special days refer to the office for the schedule)



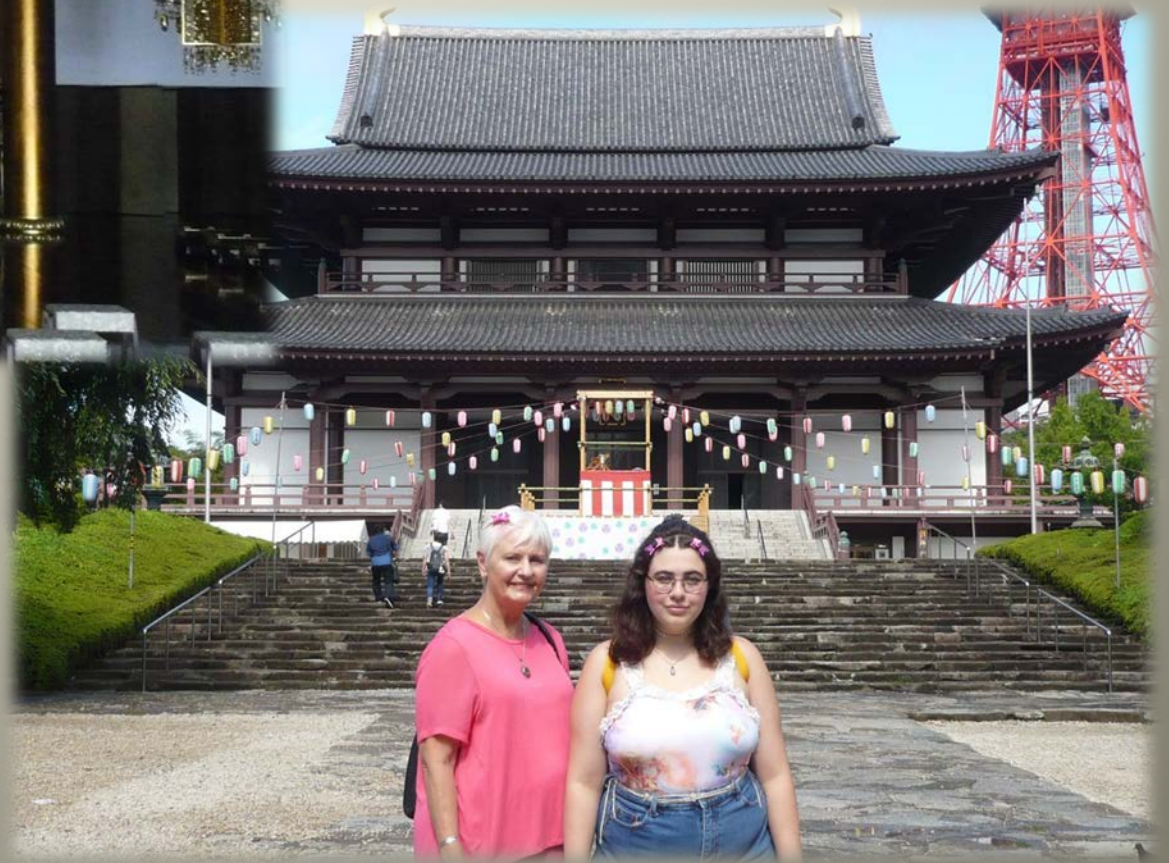
**7 慈雲閣** Ji-unshu-kan  
 1階 多目的施設  
 2階 開山堂 開山上人をお祀りしています。  
 1st floor: multipurpose hall  
 2nd floor: Kaisan-ji image of Shoun Shoun, the founder of Zojo-ji, is enshrined



**8 増上寺会館** Zojo-ji Kaikan (assembly hall)  
 会館2階に事務所がございます。  
 The office of Zojo-ji is on the 2nd floor.

お手洗い利用時間 9:00~17:00 拝観時間 9:00~17:00  
 Restrooms: available 9:00-17:00 Office and building hours: 9:00-17:00

〒105-0011 東京都港区芝公園4-7-35  
 TEL:03-3432-1431(代) http://www.zojoji.or.jp









## Barrels of Sake Wrapped in Straw

During the Meiji Era, Emperor Meiji, whose divine soul is enshrined here at Meiji Jingu, led the industrial growth and modernization of Japan by encouraging various industries and supporting technological development.

Due to their grace and virtue, Emperor Meiji and his consort, Empress Shoken, the beloved mother of our nation whose soul is also enshrined here, are held in the highest esteem by the Japanese people.

These sake barrels are offered every year to the enshrined deities by members of the Meiji Jingu Zenkoku Shuzo Keishinkai (Meiji Jingu Nationwide Sake Brewers Association) including the Kotokai, which has made offerings of sake for generations, as well as other sake brewers around Japan wishing to show their deep respect for the souls of Emperor Meiji and Empress Shoken.

In addition to stating our humble gratitude to all of the brewers who have so graciously donated their sake, we also pray for the continuous prosperity of the sake brewing industry and all the other industries maintaining Japan's traditional culture.

# The Bullet Train Toyko to Kyoto at 143MPH



# Kyoto





# Mitsui Garden Hotel Kyoto Shijo - 三井ガーデンホテルズ





トイレの使い方  
**How to use this toilet**  
 厕所的使用方法  
 洗手間的使用方法  
 화장실 사용법

**Please sit down to use the toilet.**  
 請坐下使用馬桶  
 請坐下使用馬桶  
 양반기는 걸터앉아 사용하지 않습니다.

**Do not throw the toilet paper away in the trash bin. Please place the toilet paper in the toilet and flush.**  
 トイレペーパーはゴミ箱に捨てずながしてください  
 請不要將使用過的衛生紙的進垃圾桶，請直接扔進馬桶內沖掉  
 請不要將使用過的衛生紙的進垃圾桶，請直接扔進馬桶內沖掉  
 용지는 휴지통에 버리지 마시고 변기에 버려주세요.

**Push the lever down to flush the toilet.**  
 沖水時按一下把手即可  
 沖水時按一下把手即可  
 레버를 누르시면 자동으로 물이 내려옵니다.



Kinkakuji (Golden Pavilion)  
Temple building covered in gold

# Nijo Castle (Nijojo) Former Kyoto residence of the shogun



# Fushimi Inari Shrine



Senbon Torii ("thousands of torii gates")

# KYOTO WASHINKAN

WAK JAPAN Co.  
533-3, Yamato oji 1-chome









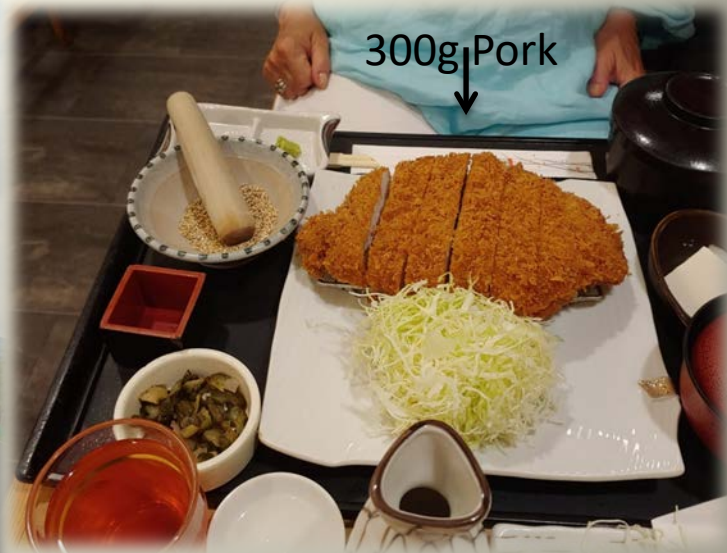
# Cat Cafe Nekokaigi



# Arashiyama Monkey Park Iwatayama







Kofukuji Temple  
5 Story Pagoda





Owl cafe WATA WATA



Central city park with wild deer



# Kobe Airport Osaka to Ishigaki, Okinawa



# Ishigaki / Taketomi / Iriomote Islands 2500 miles from nowhere



Ishigaki Island  
石垣島



Vessel Hotel Ishigaki Island







## Japanese Febreze

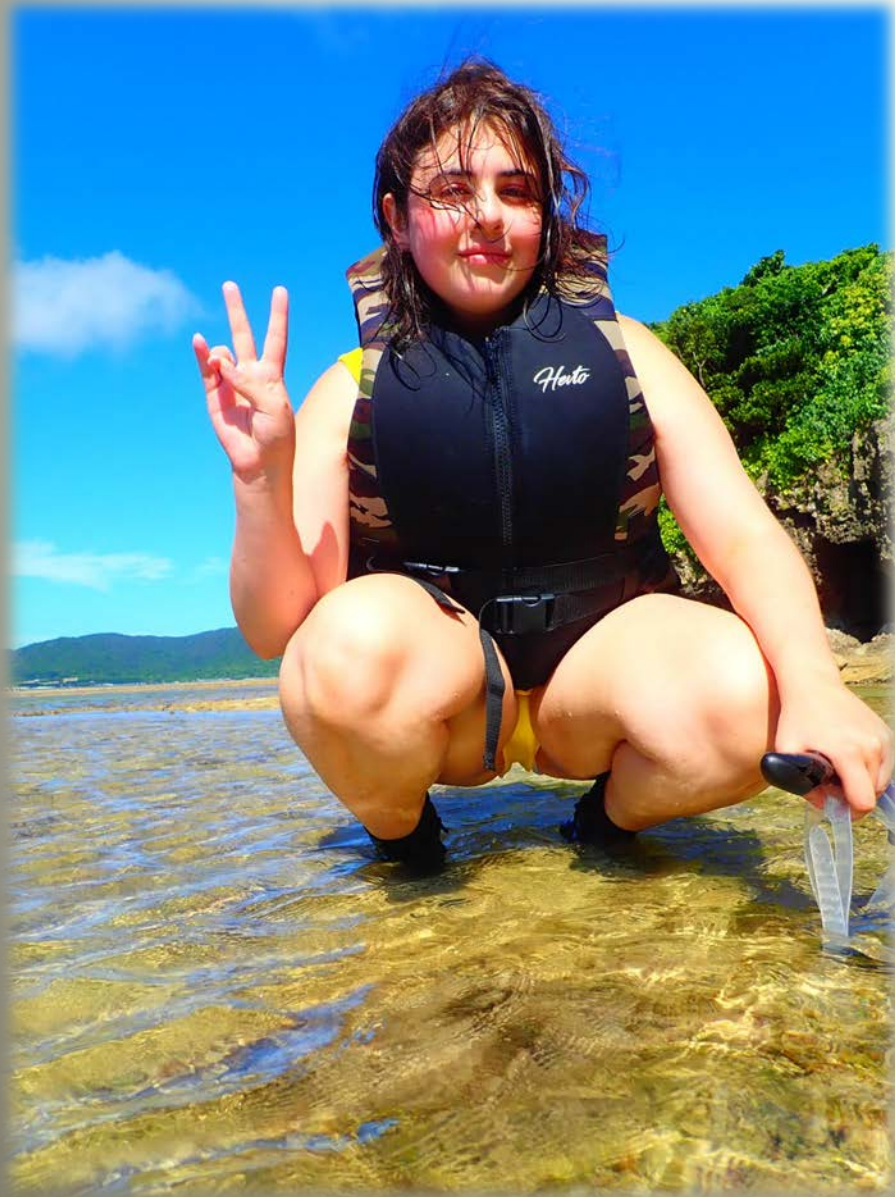


## "Pizza" Lunch w/ Scrambled Egg

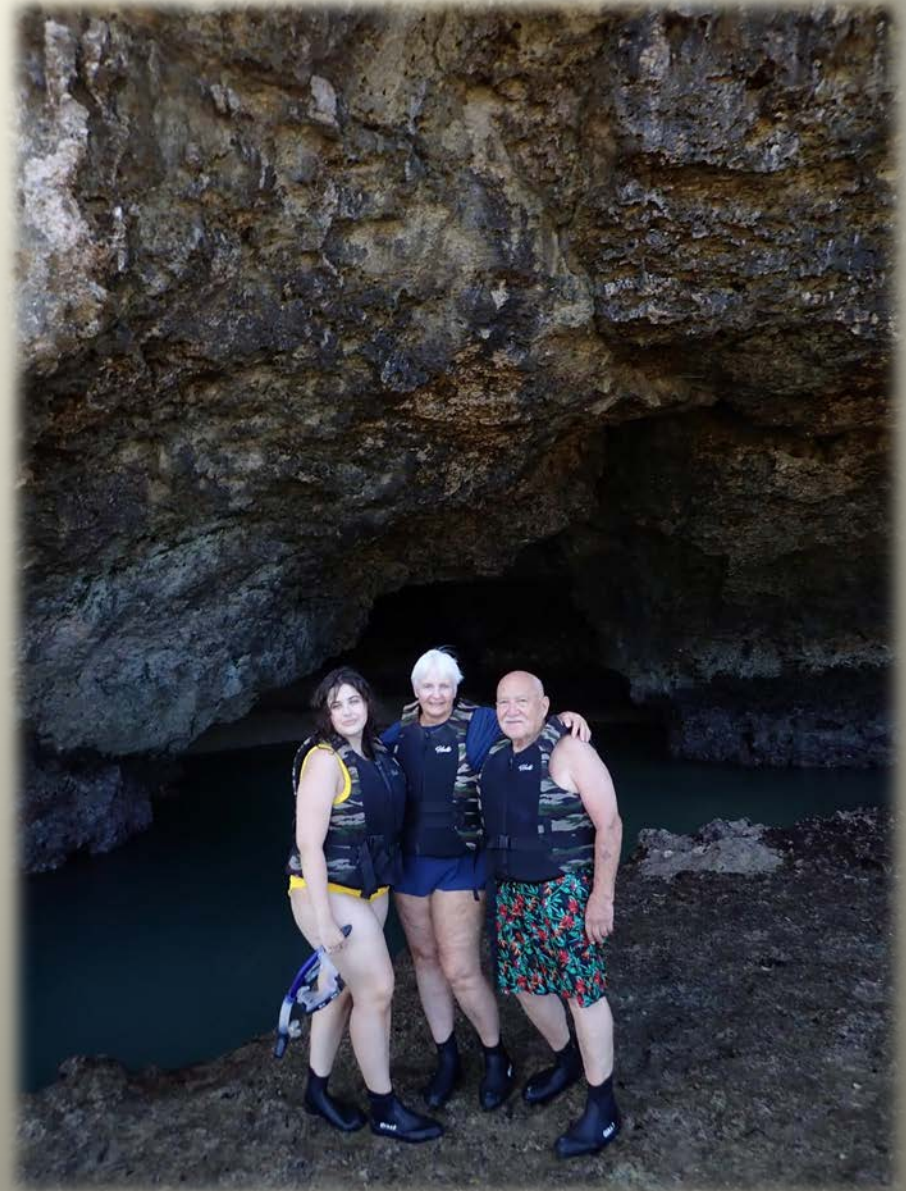


## Ferry Terminal





## Snorkeling the Blue Cave



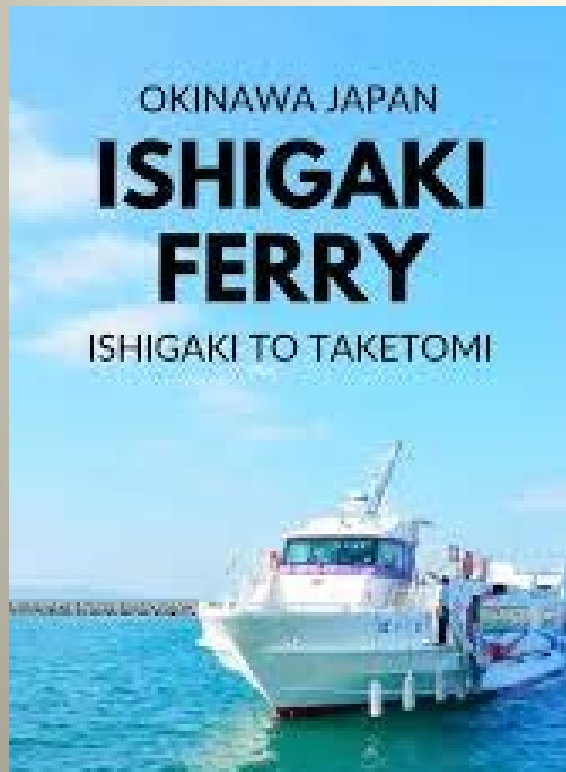
## Our Favorite Restaurant – 3 nights



## An Office Party



# Kondo Beach

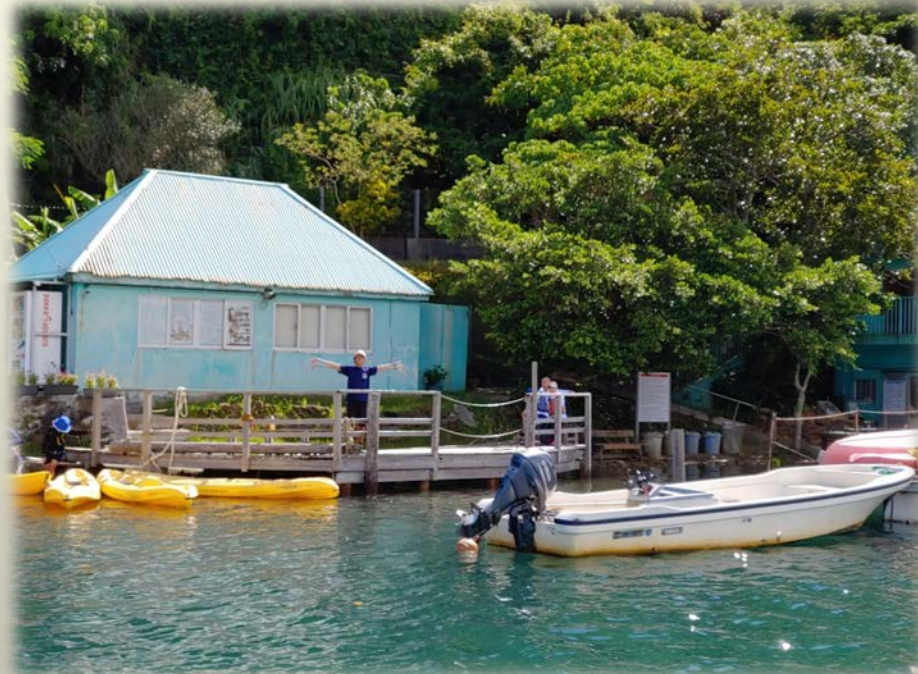


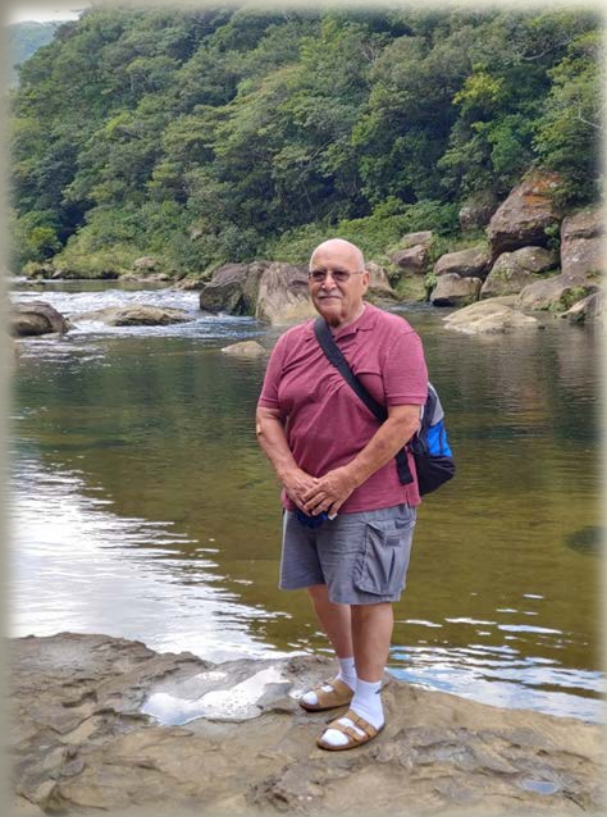






# Iriomote Island Urauchi River Cruise, Maryudo Falls Adventure









# Starsand Beach











From ISHIGAKI to TOKYO (Haneda)			
Airline	Flight NO.	Departure	Arrival
JTA	70	10:35	13:30







# PARK HOTEL T O K Y O





Views from our 32<sup>nd</sup> floor room



 NINJA  
AKASAKA





Conch



Mt. Fuji Desert



Japanese Wagyu Steak





# Kite Museum











# Ameya Yokocho (Ameyoko) アメヤ横丁



## Love for Sale 2<sup>nd</sup> Floor



## Hyper Media Men's Relaxation Space



強壯・スタミナ専門店  
**上野宝仙堂**  
STAMINA & HORMONE DRUGS





# Temple in middle of shopping district



## Harajuku - AGAIN

Center of teenage fashion and cosplay culture



Taylor needed an appointment to shop here.





Heading Home – Leave Wed. at 5pm arrive NY Wed. 5pm after 12+ hours in the air.

